



GENERAL INFORMATION

Type	V2EG160L6AB34	Efficiency Class	IE2
Pout [kW]	11	Vibration Class	A
Speed [rpm]	965	Weight [kg]	
Frame	160L	Degree of Protection	IP55
Current [A]	22	Cooling Method	IC 411
cos φ	0,82	Insulation Class	F
Rotation	CW-CCW	Temperature Class	B
Duty	S1	Construction	IM B34
Ambient Temp. [°C]	-20...+40	Altitude above sea [m]	1000

USE WITH VARIABLE SPEED DRIVE
ONLY ACC. EU REGULATION 640/2009

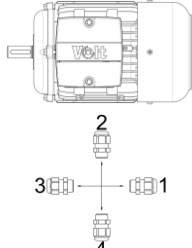
3~MOT	Type	DM 160L-6				η%	
S1	IM B34	IP 55	I.C.L.F		IE2 - 88,7		
V	Hz	A	kW	cos φ	1 / min	LOAD	EFF.
Δ 400	50	22	11	0,82	965	%75	88
Δ 480	60	22	13,2	0,81	1158	%50	87,5

ELECTRICAL DATA (RAW MEASUREMENT DATA)

V1	%Load	T [Nm]	I [A]	rpm	P2 [W]	cos φ	Efficiency	Hz
400	100	108,86	22	965	11000	0,82	88,7	50
400	75	80,81	18,7	975	8250	0,72	88	50
400	50	53,32	16,2	985	5500	0,56	87,5	50

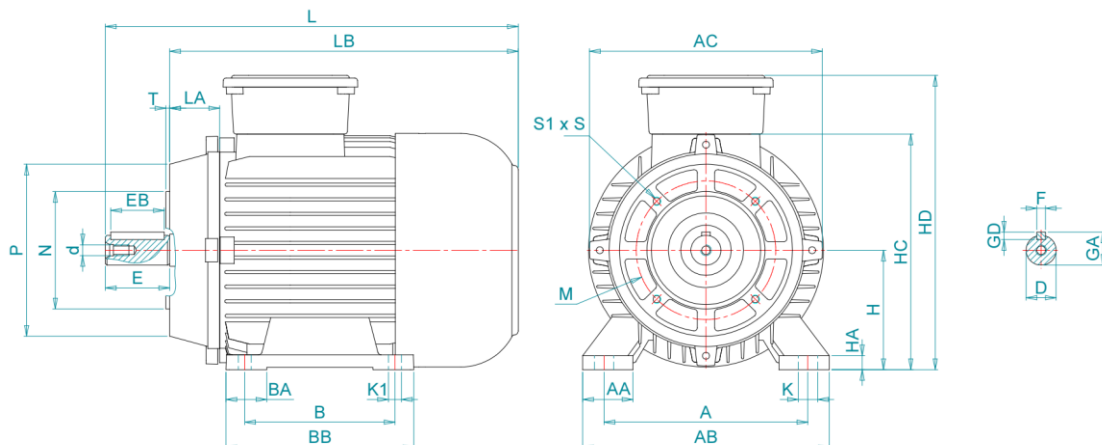
Locked Rotor Current	Ia [A]	139	Breakdown Torque	Mk [Nm]	335
	Ia / In	6,32		Mk / Mn	3,08
Locked Rotor Torque	Ma [Nm]	263	No Load Current	[A]	12,1
	Ma / Mn	2,42	No Load Power	[W]	561

MECHANICAL DATA

DE Bearing	6309-ZZ	Sound Pressure - 50 Hz - dB[B]	84	Cable Gland Position 
NDE Bearing	6209-ZZ	Sound Pressure - 60 Hz - dB[B]	87	
Fixed Bearing	YES	Housing Material	Cast Iron	
Lubrication	-	DE Shield Material	Cast Iron	
Grease Amount	-	Terminal Box Material	Aluminium	
Grease Type	-	Cable Entry	M32	
Feather Key	12*8*90	Cable Gland Position	4	
Balance	G 2,5 Half Key			

MECHANICAL DIMENSIONS

A	AA	AB	AC	AD	B	B'	BA	BB	C	D	d	E	EB	F	GA
254	72	52,1	306	-	254	-	52,1	308,2	108	42	M16	110	90	12	45
GD	H	HA	HC	HD	K	K1	L	LA	LB	M	N	P	S	S1	T
8	160	23	320	396,9	14,5	14,5	648	63,5	584,5	-	-	-	-	-	-



Kazim Karabekir Cad. No:84 Kemalpaşa 35735 İzmir/Turkey

Tel: +90 (232) 877 10 60 (pbx)

Fax: +90 (232) 877 10 59

Email: info@voltmotor.com.tr

www.voltmotor.com.tr

Volt Motor has right to change all the data without prior notice.